

LEADER  
CORPORATION  
  
CATALOG

Release: 2012

Contacts: Justin Arcari  
Mike Arcari

51644 Filomena Drive  
Shelby Township, MI 48315  
p. 586.566.7114  
f. 586.566.7115  
[www.leader-corp.com](http://www.leader-corp.com)

**51644 Filomena Drive  
Shelby Twp., MI 48315  
(586) 566-7114 Phone  
(586) 566-7115 Fax  
E-mail : [info@leader-corp.com](mailto:info@leader-corp.com)  
Website : [www.leader-corp.com](http://www.leader-corp.com)**

**We gladly accept American Express,  
Discover, Visa and MasterCard.**

# **Index**

## **Thread Gages**

**Taperlock Thread Plug Gages.....2**

**Reversible Thread Plug Gages.....3**

**Thread Ring Gages and Truncated Set Plug Gages..4**

**Metric Thread Gages.....5**

**Master Setting Rings and Setting Plug Gages.....6**

**Helicoil Gages.....7**

**Pipe Thread Gages.....8**

## **Precision Plain Gages**

**Taperlock Plug Gages.....9**

**Reversible Plug Gages.....10**

**Trilock Plug Gages.....11**

**Ring Gages.....12/13**

**Master Discs.....14/15**

**Barrel Flush Pins.....16**

**Bar Type Flush Pins.....17**

**Countersink Type Large Flush Pins.....18**

**Countersink Type Small Flush Pin.....19**

## **Calibration**

**Certification and inspection Services.....20**

**Leader policies and Standards.....21**

**Gagemaker's Tolerance Chart.....22**

**Company Info.....23**

***\*\* Prices are subject to change without notice.***

# Taperlock Thread Plug Gages

Class "X" Tolerance - Precision Lapped



Nom. Size	Thread per Inch			Price			Handles		Thread Length	
	NC UNC	NF UNF	NF UNEF	Go & NoGo Members Steel	Chrome	Titanium	A.G.D. #	Price	Go	NoGo
0 (.060)		80		\$42.00	\$47.00	\$68.00	000	\$13.00	1/4	3/16
1 (.073)	64	72		\$42.00	\$47.00	\$68.00	000	\$13.00	1/4	3/16
2 (.086)	56	64		\$41.00	\$46.00	\$60.00	000	\$13.00	1/4	3/16
3 (.099)	48	56		\$41.00	\$46.00	\$60.00	000	\$13.00	1/4	3/16
4 (.112)	40	48		\$37.00	\$43.00	\$57.00	00	\$13.00	5/16	7/32
5 (.125)	40	44		\$37.00	\$43.00	\$57.00	00	\$13.00	5/16	7/32
6 (.138)	32	40		\$32.00	\$37.00	\$49.00	00	\$13.00	5/16	7/32
8 (.164)	32	36		\$32.00	\$37.00	\$49.00	0	\$13.00	13/32	7/16
10 (.190)	24	32		\$32.00	\$37.00	\$49.00	0	\$13.00	13/32	7/16
12 (.216)	24	28		\$32.00	\$37.00	\$49.00	0	\$13.00	13/32	7/16
12 (.216)			32	\$57.00	\$63.00	\$82.00	0	\$13.00	13/32	7/16
1/4	20	28		\$29.00	\$33.00	\$45.00	1	\$13.00	1/2	5/16
1/4			32	\$52.00	\$63.00	\$82.00	1	\$13.00	1/2	5/16
5/16	18	24		\$29.00	\$33.00	\$45.00	1	\$13.00	1/2	5/16
5/16			32	\$54.00	\$59.00	\$88.00	1	\$13.00	1/2	5/16
3/8	16	24		\$29.00	\$34.00	\$45.00	2	\$13.00	3/4	3/8
3/8			32	\$63.00	\$73.00	\$98.00	2	\$13.00	3/4	3/8
7/16	14	20		\$30.00	\$34.00	\$47.00	2	\$13.00	3/4	3/8
7/16			28	\$63.00	\$73.00	\$98.00	2	\$13.00	3/4	3/8
1/2	13	20		\$31.00	\$37.00	\$49.00	2	\$13.00	3/4	3/8
1/2	12		28	\$66.00	\$76.00	\$102.00	2	\$13.00	3/4	3/8
9/16	12	18		\$42.00	\$47.00	\$65.00	3	\$13.00	7/8	1/2
9/16			24	\$68.00	\$78.00	\$105.00	3	\$13.00	7/8	1/2
5/8	11	18		\$42.00	\$47.00	\$65.00	3	\$13.00	7/8	1/2
5/8			24	\$68.00	\$78.00	\$105.00	3	\$13.00	7/8	1/2
11/16			24	\$68.00	\$78.00	\$105.00	3	\$13.00	7/8	1/2
3/4	10	16		\$46.00	\$52.00	\$72.00	3	\$13.00	7/8	1/2
3/4			20	\$74.00	\$83.00	\$115.00	3	\$13.00	7/8	1/2
13/16			20	\$80.00	\$94.00	\$127.00	3	\$13.00	7/8	1/2
7/8	9	14		\$47.00	\$53.00	\$73.00	4	\$15.00	1	5/8
7/8			20	\$80.00	\$94.00	\$127.00	4	\$15.00	1	5/8
15/16			20	\$80.00	\$94.00	\$127.00	4	\$15.00	1	5/8
1	8	12	14	\$57.00	\$67.00	\$96.00	4	\$15.00	1	5/8
1			20	\$95.00	\$108.00	\$114.00	4	\$15.00	1	5/8
1 1/16		12	18	\$92.00	\$108.00	\$144.00	4	\$15.00	1	5/8
1 1/8	7	12		\$73.00	\$81.00	\$108.00	4	\$15.00	1	5/8
1 1/8			18	\$92.00	\$105.00	\$144.00	4	\$15.00	1	5/8
1 3/16		12	18	\$99.00	\$113.00	\$156.00	4	\$15.00	1	5/8
1 1/4	7	12		\$74.00	\$79.00	\$115.00	5	\$19.00	Coarser than 12 T.P.I. 1 1/4 12 T.P.I. & Finer 1	3/4
1 1/4			18	\$98.00	\$110.00	\$155.00	5	\$19.00		
1 5/16		12	18	\$107.00	\$121.00	\$168.00	5	\$19.00		
1 3/8	6	12		\$83.00	\$97.00	\$132.00	5	\$19.00		
1 3/8			18	\$112.00	\$128.00	\$176.00	5	\$19.00	12 T.P.I. & Finer 1	3/4
1 7/16		12	18	\$119.00	\$133.00	\$185.00	5	\$19.00		
1 1/2	6	12		\$94.00	\$107.00	\$145.00	5	\$19.00		
1 1/2			18	\$121.00	\$133.00	\$189.00	5	\$19.00		

# Reversible Thread Plug Gages

## Class "X" Tolerance - Precision Lapped

Add 10% for Chrome  
Add 100% for Titanium

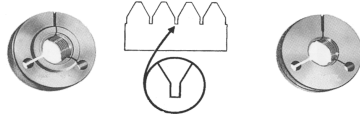


Nom. Size	Thread per Inch			Price Ea. Members		Price Ea. Handles	
	NC UNC	NF UNF	NF UNEF	Go 1B, 2B, 3B	Nogo 2B, 3B	A.G.D. #	
0 (.060)		80		\$88.00	\$88.00	1W	\$12.00
1 (.073)	64	72		\$88.00	\$88.00	1W	\$12.00
2 (.086)	56	64		\$54.00	\$54.00	2W	\$12.00
3 (.099)	48	56		\$54.00	\$54.00	2W	\$12.00
4 (.112)	40	48		\$50.00	\$50.00	2W	\$12.00
5 (.125)	40	44		\$50.00	\$50.00	2W	\$12.00
6 (.138)	32			\$44.00	\$44.00	2W	\$12.00
6 (.138)		40		\$46.00	\$46.00	2W	\$12.00
8 (.164)	32			\$44.00	\$44.00	2W	\$12.00
8 (.164)		36		\$46.00	\$46.00	2W	\$12.00
10 (.190)	24	32		\$45.00	\$45.00	3W	\$14.00
12 (.216)	24	28		\$48.00	\$48.00	3W	\$14.00
12 (.216)			32	\$74.00	\$74.00	3W	\$14.00
1/4	20	28		\$41.00	\$41.00	3W	\$14.00
1/4			32	\$73.00	\$73.00	3W	\$14.00
5/16	18	24		\$42.00	\$42.00	4W	\$14.00
5/16			32	\$73.00	\$73.00	4W	\$14.00
3/8	16	24		\$44.00	\$44.00	4W	\$14.00
3/8			32	\$81.00	\$81.00	4W	\$14.00
7/16	14	20		\$46.00	\$46.00	5W	\$17.00
7/16			28	\$83.00	\$83.00	5W	\$17.00
1/2	13	20		\$48.00	\$48.00	5W	\$17.00
1/2			28	\$83.00	\$83.00	5W	\$17.00
9/16	12	18		\$53.00	\$53.00	6W	\$18.00
9/16			24	\$86.00	\$86.00	6W	\$18.00
5/8	11	18		\$53.00	\$53.00	6W	\$18.00
5/8			24	\$86.00	\$86.00	6W	\$18.00
3/4	10	16		\$57.00	\$57.00	7W	\$21.00
3/4			20	\$91.00	\$91.00	7W	\$21.00

## Reversible Midget Thread Trilocks

7/8	9	14		\$99.00	\$99.00	2 1/2	\$17.00
7/8			20	\$121.00	\$121.00	2 1/2	\$17.00
1	8	12	14NS	\$103.00	\$103.00	3 1/2	\$17.00
1			20	\$127.00	\$127.00	3 1/2	\$17.00
1 1/8	7	12		\$143.00	\$143.00	3 1/2	\$17.00
1 1/8			18	\$171.00	\$171.00	3 1/2	\$17.00
1 1/4	7	12		\$153.00	\$153.00	4 1/2	\$20.00
1 1/4			18	\$171.00	\$171.00	4 1/2	\$20.00
1 3/8	6	12		\$178.00	\$178.00	4 1/2	\$20.00
1 3/8			18	\$196.00	\$196.00	4 1/2	\$20.00
1 1/2	6	12		\$187.00	\$187.00	4 1/2	\$20.00
1 1/2			8	\$209.00	\$209.00	4 1/2	\$20.00

Add 20% for Chrome Plate  
 For "J" Thread Conversion add \$25.00  
 For W Tolerance Pitch Dia. Add 25%



## Thread Ring Gages

Root Relieved Thread Ring Gages

Nom. Size	Thread per Inch			Price Ea.		
	NC	NF	NF	Go & Nogo Rings		Holder
	UNC	UNF	UNEF	2A or 3A	Size	
0 (.060)		80		\$141.00	1	\$15.00
1 (.073)	64	72		\$130.00	"	\$15.00
2 (.086)	56	64		\$114.00	"	\$15.00
3 (.099)	48	56		\$114.00	"	\$15.00
4 (.112)	40	48		\$100.00	"	\$15.00
5 (.125)	40	44		\$99.00	"	\$15.00
6 (.138)	32	40		\$95.00	"	\$15.00
8 (.164)	32	36		\$95.00	"	\$15.00
10 (.190)	24	32		\$95.00	"	\$15.00
12 (.216)	24	28		\$95.00	"	\$15.00
12 (.216)			32	\$128.00	"	\$15.00
1/4	20	28		\$85.00	2	\$18.00
1/4			32	\$128.00	"	\$18.00
5/16	18	24		\$85.00	"	\$18.00
5/16			32	\$128.00	"	\$18.00
3/8	16	24		\$89.00	3	\$20.00
3/8			32	\$128.00	"	\$20.00
7/16	14	20		\$92.00	"	\$20.00
7/16			28	\$128.00	"	\$20.00
1/2	13	20		\$98.00	"	\$20.00
1/2	12		28	\$128.00	"	\$20.00
9/16	12	18		\$110.00	4	\$24.00
9/16			24	\$130.00	"	\$24.00
5/8	11	18		\$119.00	"	\$24.00
5/8			24	\$141.00	"	\$24.00
11/16			24	\$162.00	"	\$24.00
3/4	10	16		\$141.00	"	\$24.00
3/4			20	\$169.00	"	\$24.00
13/16			20	\$175.00	"	\$24.00
7/8	9	14		\$146.00	5	\$32.00
7/8			20	\$176.00	"	\$32.00
15/16			20	\$185.00	"	\$32.00
1	8	12	14NS	\$193.00	"	\$32.00
1			20	\$206.00	"	\$32.00
1 1/16		12	18	\$211.00	"	\$32.00
1 1/8	7	12		\$211.00	"	\$32.00
1 1/8			18	\$224.00	"	\$32.00
1 3/16		12	18	\$224.00	6	\$39.00
1 1/4	7	12		\$235.00	"	\$39.00
1 1/4			18	\$238.00	"	\$39.00
1 5/16		12	18	\$238.00	"	\$39.00
1 3/8	6	12		\$235.00	"	\$39.00
1 3/8			18	\$274.00	"	\$39.00
1 7/16		12	18	\$287.00	"	\$39.00
1 1/2	6	12		\$274.00	"	\$39.00
1 1/2			8	\$274.00	"	\$39.00



## Truncated Thread Setting Plug Gages

Go & Nogo Set Plug Members	Price Ea.	
	2A or 3A	Handle
	Size	
	\$84.00	000 \$12.00
	\$84.00	" \$12.00
	\$75.00	" \$12.00
	\$75.00	" \$12.00
	\$73.00	00 \$12.00
	\$68.00	" \$12.00
	\$68.00	" \$12.00
	\$68.00	0 \$12.00
	\$68.00	" \$12.00
	\$68.00	" \$12.00
	\$84.00	" \$12.00
	\$69.00	1 \$12.00
	\$84.00	" \$12.00
	\$69.00	" \$12.00
	\$84.00	" \$12.00
	\$67.00	2 \$12.00
	\$92.00	" \$12.00
	\$67.00	" \$12.00
	\$92.00	" \$12.00
	\$73.00	" \$12.00
	\$102.00	" \$12.00
	\$77.00	3 \$12.00
	\$111.00	" \$12.00
	\$79.00	" \$12.00
	\$116.00	" \$12.00
	\$122.00	" \$12.00
	\$95.00	" \$12.00
	\$120.00	" \$12.00
	\$127.00	" \$12.00
	\$106.00	4 \$14.00
	\$127.00	" \$14.00
	\$131.00	" \$14.00
	\$121.00	" \$14.00
	\$133.00	" \$14.00
	\$143.00	" \$14.00
	\$133.00	" \$14.00
	\$146.00	" \$14.00
	\$146.00	5 \$18.00
	\$144.00	" \$18.00
	\$157.00	" \$18.00
	\$172.00	" \$18.00
	\$176.00	" \$18.00
	\$184.00	" \$18.00
	\$187.00	" \$18.00
	\$183.00	" \$18.00
	\$199.00	" \$18.00

# Metric Thread Gages

We offer the "MJ" series of gages



For Titanium Nitrate of work plugs: Taperlock - Add 80%  
Reversible - Add 100%

For chrome plate add 10% to plug prices.  
For chrome plate add 20% to ring prices.  
For "W" tolerance add 25%

Nom. Size	Pitch	Price Ea.			Price Ea.			Price Ea.			Price Ea.		
		Working Plug Gages		Handle Size	Reversible Plug Gages		Handle Size	Truncated Set Plug Gages		Handle Size	Ring Gages		Holder Price
		Go or Hi 6H Tol.	Price		Go or Hi 6H Tol.	Price		Go or Hi 6g Tol.	Price		Go or Lo 6g Tol.	Price	
1.6	0.35	\$75.00	000	\$12.00	\$112.00	1W	\$12.00	\$138.00	000	\$12.00	\$199.00	1	\$14.00
1.8	0.35	\$75.00	"	\$12.00	\$112.00	"	\$12.00	\$138.00	"	\$12.00	\$199.00	"	\$14.00
2.0	0.40	\$50.00	"	\$12.00	\$69.00	2W	\$12.00	\$84.00	"	\$12.00	\$140.00	"	\$14.00
2.2	0.45	\$50.00	"	\$12.00	\$69.00	"	\$12.00	\$84.00	"	\$12.00	\$140.00	"	\$14.00
2.5	0.45	\$45.00	00	\$12.00	\$69.00	"	\$12.00	\$84.00	00	\$12.00	\$140.00	"	\$14.00
3.0	0.50	\$45.00	"	\$12.00	\$54.00	"	\$12.00	\$83.00	"	\$12.00	\$121.00	"	\$14.00
3.5	0.60	\$39.00	"	\$12.00	\$50.00	"	\$12.00	\$83.00	"	\$12.00	\$121.00	"	\$14.00
4.0	0.70	\$39.00	0	\$12.00	\$50.00	"	\$12.00	\$79.00	0	\$12.00	\$112.00	"	\$14.00
4.5	0.75	\$45.00	"	\$12.00	\$50.00	3W	\$14.00	\$79.00	"	\$12.00	\$112.00	"	\$14.00
5.0	0.80	\$39.00	"	\$12.00	\$50.00	"	\$14.00	\$79.00	"	\$12.00	\$112.00	"	\$14.00
5.5	0.75	\$45.00	"	\$12.00	\$50.00	"	\$14.00	\$79.00	"	\$12.00	\$105.00	"	\$14.00
6.0	1.00	\$33.00	1	\$12.00	\$41.00	"	\$14.00	\$67.00	1	\$12.00	\$105.00	"	\$14.00
7.0	1.00	\$33.00	"	\$12.00	\$41.00	"	\$14.00	\$67.00	"	\$12.00	\$105.00	2	\$17.00
8.0	1.25	\$33.00	"	\$12.00	\$47.00	4W	\$14.00	\$67.00	"	\$12.00	\$105.00	"	\$17.00
9.0	1.25	\$35.00	2	\$12.00	\$41.00	"	\$14.00	\$73.00	2	\$12.00	\$112.00	3	\$19.00
10.0	0.75 1.25 1.50	\$35.00	"	\$12.00	\$47.00	"	\$14.00	\$73.00	"	\$12.00	\$112.00	"	\$19.00
11.0	1.50	\$37.00	"	\$12.00	\$47.00	"	\$14.00	\$74.00	"	\$12.00	\$119.00	"	\$19.00
12.0	1.25 1.50 1.75	\$37.00	"	\$12.00	\$45.00	5W	\$17.00	\$77.00	"	\$12.00	\$114.00	"	\$19.00
14.0	1.50 2.00	\$43.00	3	\$12.00	\$50.00	6W	\$18.00	\$84.00	3	\$12.00	\$114.00	4	\$22.00
15.0	1.00 1.50	\$47.00	"	\$12.00	\$50.00	"	\$18.00	\$84.00	"	\$12.00	\$125.00	"	\$22.00
16.0	1.50 2.00	\$43.00	"	\$12.00	\$52.00	7W	\$20.00	\$84.00	"	\$12.00	\$125.00	"	\$22.00
17.0	1.00 1.50	\$45.00	"	\$12.00	\$59.00	"	\$20.00	\$101.00	"	\$12.00	\$167.00	"	\$22.00
18.0	1.50 2.50	\$48.00	"	\$12.00	\$63.00	"	\$20.00	\$101.00	"	\$12.00	\$167.00	"	\$22.00
20.0	1.00 1.50 2.50	\$52.00	4	\$14.00				\$121.00	4	\$14.00	\$199.00	5	\$31.00
22.0	1.50 2.50	\$52.00	"	\$14.00				\$127.00	"	\$14.00	\$199.00	"	\$31.00
24.0	2.00 3.00	\$63.00	"	\$14.00				\$140.00	"	\$14.00	\$234.00	"	\$31.00
25.0	1.50 2.00	\$69.00	"	\$14.00				\$144.00	"	\$14.00	\$234.00	"	\$31.00
26.0	1.00 1.50	\$79.00	"	\$14.00				\$152.00	"	\$14.00	\$231.00	"	\$31.00
27.0	2.00 3.00	\$79.00	"	\$14.00				\$152.00	"	\$14.00	\$231.00	"	\$31.00
28.0	1.00 1.50 2.00	\$92.00	"	\$14.00				\$155.00	"	\$14.00	\$231.00	"	\$31.00
30.0	1.50 2.00 3.50	\$92.00	5	\$18.00				\$155.00	5	\$18.00	\$235.00	6	\$36.00
32.0	1.50 2.00	\$92.00	"	\$18.00				\$171.00	"	\$18.00	\$250.00	"	\$36.00
33.0	2.00	\$99.00	"	\$18.00				\$171.00	"	\$18.00	\$250.00	"	\$36.00
35.0	1.50	\$99.00	"	\$18.00				\$178.00	"	\$18.00	\$264.00	"	\$36.00
36.0	2.00 4.00	\$107.00	"	\$18.00				\$188.00	"	\$18.00	\$278.00	"	\$36.00
38.0	1.50 2.00	\$114.00	"	\$18.00				\$187.00	"	\$18.00	\$293.00	"	\$36.00
39.0	1.50 2.00	\$122.00	"	\$18.00				\$206.00	"	\$18.00	\$305.00	"	\$36.00

## Variable Setting Rings Class "W"



Inch Size	Price Ea.	Metric Size	Price Ea.
10-24	\$354.00	M5 x 0.8	\$354.00
10-32	\$354.00	M6 x 1.0	\$354.00
12-24	\$354.00	M8 x 1.25	\$354.00
12-28	\$354.00	M10 x 1.25	\$354.00
1/4-20	\$354.00	M10 x 1.5	\$354.00
1/4-28	\$354.00	M12 x 1.25	\$354.00
5/16-18	\$354.00	M12 x 1.75	\$354.00
5/16-24	\$354.00	M14 x 1.5	\$411.00
3/8-16	\$354.00	M14 x 2.0	\$411.00
3/8-24	\$354.00	M16 x 2.0	\$411.00
7/16-14	\$354.00	M20 x 1.5	\$411.00
7/16-20	\$354.00	M22 x 1.5	\$411.00
1/2-13	\$354.00	M24 x 3.0	\$411.00
1/2-20	\$354.00		
9/16-12	\$411.00		
9/16-18	\$411.00		
5/8-11	\$411.00		
5/8-18	\$411.00		
3/4-10	\$411.00		
3/4-16	\$411.00		
7/8-9	\$411.00		
7/8-14	\$411.00		
1.0-8	\$411.00		
1.0-12	\$411.00		
1.0-14	\$411.00		
1 1/8-7	\$498.00		
1 1/8-12	\$498.00		
1 1/4-7	\$498.00		
1 1/4-12	\$498.00		
1 3/8-6	\$498.00		
1 3/8-12	\$498.00		
1 1/2-6	\$498.00		
1 1/2-12	\$498.00		

## Variable Setting Plugs Class "W" Full Form



Inch Size	Price Ea.	Inch Size	Price Ea.
0-80	\$83.00	3/4-10	\$97.00
1-64	\$83.00	3/4-16	\$97.00
1-72	\$83.00	7/8-9	\$124.00
2-56	\$83.00	7/8-14	\$124.00
2-64	\$83.00	1.0-8	\$134.00
3-48	\$80.00	1.0-12	\$134.00
3-56	\$80.00	1.0-14	\$134.00
4-40	\$80.00	1 1/8-7	\$157.00
4-48	\$80.00	1 1/8-12	\$157.00
5-40	\$80.00	1 1/4-7	\$174.00
5-44	\$80.00	1 1/4-12	\$174.00
6-32	\$76.00	1 3/8-6	\$198.00
6-40	\$76.00	1 3/8-12	\$198.00
8-32	\$76.00	1 1/2-6	\$209.00
8-36	\$76.00	1 1/2-12	\$209.00
10-24	\$76.00	<b>Metric</b>	<b>Price</b>
10-32	\$76.00	M1.6 x 0.35	\$106.00
12-24	\$83.00	M2 x 0.4	\$98.00
12-28	\$83.00	M2.5 x 0.45	\$98.00
1/4-20	\$70.00	M3 x 0.5	\$98.00
1/4-28	\$70.00	M4 x 0.7	\$96.00
5/16-18	\$70.00	M5 x 0.8	\$96.00
5/16-24	\$70.00	M6 x 1.0	\$81.00
3/8-16	\$70.00	M8 x 1.25	\$81.00
3/8-24	\$70.00	M10 x 1.25	\$88.00
7/16-14	\$70.00	M10 x 1.5	\$88.00
7/16-20	\$70.00	M12 x 1.25	\$93.00
1/2-13	\$74.00	M12 x 1.75	\$93.00
1/2-20	\$74.00	M14 x 1.5	\$104.00
9/16-12	\$83.00	M14 x 2.0	\$104.00
9/16-18	\$83.00	M16 x 2.0	\$124.00
5/8-11	\$83.00	M20 x 1.5	\$143.00
5/8-18	\$83.00	M22 x 1.5	\$152.00
		M24 x 3.0	\$171.00

Note: Handles are \$18.00

For Indicating type internal and  
external thread gaging systems  
Call: 586-566-7114

Authorized Starrett Distributor



# Helicoil Gages (STI)

Add 10% For Hard Chrome

## Taperlock Design - Class 2B or 3B

Nom. Size	Thread Per Inch		Price Ea. "X" Tolerance		Price Ea. "W" Tolerance	
	UNC	UNF	Go or Nogo Member Ea.	Handle	Go or Nogo Member	Handle
2	56	64	\$53.00	\$14.00	\$60.00	\$14.00
4	40	48	\$44.00	\$14.00	\$49.00	\$14.00
5	40	44	\$44.00	\$14.00	\$49.00	\$14.00
6	32	40	\$44.00	\$14.00	\$49.00	\$14.00
8	32	36	\$44.00	\$14.00	\$49.00	\$14.00
10	24	32	\$42.00	\$14.00	\$47.00	\$14.00
12	24	28	\$42.00	\$14.00	\$47.00	\$14.00
1/4	20	28	\$41.00	\$14.00	\$51.00	\$14.00
5/16	18	24	\$41.00	\$14.00	\$51.00	\$14.00
3/8	16	24	\$42.00	\$14.00	\$47.00	\$14.00
7/16	14	20	\$42.00	\$14.00	\$47.00	\$14.00
1/2	13	20	\$46.00	\$14.00	\$51.00	\$14.00
9/16	12	18	\$58.00	\$14.00	\$66.00	\$14.00
5/8	11	18	\$64.00	\$14.00	\$73.00	\$14.00
3/4	10	16	\$72.00	\$14.00	\$80.00	\$14.00

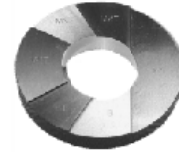
## Taperlock Design - Class 4H5H

Nom. Size	Pitch		Price Ea. "X" Tolerance		Price Ea. "W" Tolerance	
	Course	Fine	Go or Nogo Member Ea.	Handle Ea.	Go or Nogo Member	Handle Ea.
2.2	0.45		\$60.00	\$14.00	\$69.00	\$14.00
2.5	0.45		\$60.00	\$14.00	\$70.00	\$14.00
3.0	0.50		\$53.00	\$14.00	\$60.00	\$14.00
3.5	0.60		\$53.00	\$14.00	\$60.00	\$14.00
4.0	0.70		\$53.00	\$14.00	\$60.00	\$14.00
5.0	0.80		\$53.00	\$14.00	\$60.00	\$14.00
6.0	1.00		\$50.00	\$14.00	\$57.00	\$14.00
7.0	1.00		\$50.00	\$14.00	\$57.00	\$14.00
8.0	1.25	1	\$50.00	\$14.00	\$57.00	\$14.00
10.0	1.50	1.25	\$50.00	\$14.00	\$57.00	\$14.00
12.0	1.75	1.5	\$53.00	\$14.00	\$60.00	\$14.00
14.0	2.00	1.5	\$64.00	\$14.00	\$73.00	\$14.00
16.0	2.00	1.5	\$69.00	\$14.00	\$76.00	\$14.00
18.0	2.50	1.5	\$81.00	\$14.00	\$91.00	\$14.00

external thread gaging systems

Call: 586-566-7114

# Pipe Thread Gages



## Taper Pipe Thread Gages

Size	NPT		NPTF Plug			NPTF Ring			Handles	
	Plug Gage	Ring Gage	Basic L1/L3	3-Step L1/L3	6-Step Plain	NPTF L1	NPTF L2	6-Step Plain	Size	Price
1/16-27	\$80.00	\$188.00	\$104.00	\$145.00	\$164.00	\$161.00	\$221.00	\$271.00	1	\$14.00
1/8-27	\$53.00	\$110.00	\$75.00	\$102.00	\$164.00	\$112.00	\$221.00	\$271.00	2	\$14.00
1/4-18	\$63.00	\$118.00	\$94.00	\$120.00	\$164.00	\$134.00	\$221.00	\$271.00	3	\$14.00
3/8-18	\$69.00	\$136.00	\$110.00	\$136.00	\$170.00	\$148.00	\$244.00	\$271.00	3	\$14.00
1/2-14	\$80.00	\$151.00	\$125.00	\$151.00	\$170.00	\$161.00	\$255.00	\$271.00	4	\$17.00
3/4-14	\$89.00	\$170.00	\$136.00	\$164.00	\$172.00	\$183.00	\$274.00	\$295.00	4	\$17.00
1.0-11 1/2	\$102.00	\$191.00	\$151.00	\$179.00	\$183.00	\$197.00	\$290.00	\$326.00	5	\$20.00
1 1/4-11 1/2	\$110.00	\$212.00	\$164.00	\$191.00	\$197.00	\$216.00	\$311.00	\$342.00	5	\$20.00
1 1/2-11 1/2	\$127.00	\$252.00	\$191.00	\$218.00	\$226.00	\$260.00	\$352.00	\$380.00	5	\$20.00
2.0-11 1/2	\$153.00	\$287.00	\$233.00	\$260.00	\$306.00	\$368.00	\$409.00	\$434.00	5	\$20.00
2 1/2-8	\$181.00	\$342.00	\$356.00	\$396.00	\$444.00	\$396.00	\$486.00	\$518.00	6	\$20.00
3.0-8	\$218.00	\$424.00	\$382.00	\$410.00	\$464.00	\$464.00	\$573.00	\$627.00	6	\$20.00
3 1/2-8	\$382.00	\$627.00							7	\$33.00
4.0-8	\$464.00	\$763.00	Quoted Upon Request						7	\$33.00
5.0-8	\$561.00	\$873.00							7	\$33.00
6.0-8	\$627.00	#####	ANPT's Quoted Upon Request						7	\$33.00

## British Pipe Plugs and Rings

Size	Taper (BSP-TR)				Straight (BSP-PL)				Holder Size	Holder Price
	Plug Gage	Handle Size	Handle Price	Ring Gage	Plug Go or High	Handle Size	Handle Price	Ring Go or Lo		
1/8-28	\$167.00	2	\$14.00	\$597.00	\$106.00	2	\$14.00	267.00	1	17.00
1/4-19	\$197.00	3	\$14.00	\$608.00	\$129.00	3	\$14.00	287.00	2	19.00
3/8-19	\$234.00	3	\$14.00	\$615.00	\$129.00	3	\$14.00	287.00	3	21.00
1/2-14	\$265.00	3	\$14.00	\$627.00	\$151.00	3	\$14.00	326.00	3	21.00
3/4-14	\$297.00	4	\$17.00	\$650.00	\$151.00	4	\$17.00	326.00	4	26.00
1.0-11	\$329.00	5	\$20.00	\$687.00	\$179.00	5	\$20.00	389.00	5	34.00
1 1/4-11	\$368.00	5 1/2	\$20.00	\$827.00	\$179.00	5 1/2	\$20.00	389.00	6	41.00
1 1/2-11	\$409.00	5 1/2	\$20.00	\$887.00	\$212.00	5 1/2	\$20.00	479.00	6	41.00
2.0-11	\$485.00	6	\$20.00	\$1,064.00	\$274.00	6	\$20.00	512.00		
2 1/2-11	\$731.00	7	\$23.00	\$1,133.00	\$310.00	7	\$23.00	609.00		

## Straight Pipe Thread Plugs and Rings

Size	NPSM-2B Pitch Dia.		NPSM-2A Pitch Dia.		Plug Go or High	Handle	Ring Go or High	Set Plug
	Min	Max	Max	Min				
1/8-27	0.3736	0.3783	0.3725	0.3689	\$97.00	\$14.00	\$233.00	\$125.00
1/4-18	0.4916	0.4974	0.4903	0.4859	\$97.00	\$14.00	\$233.00	\$125.00
3/8-18	0.6270	0.6329	0.6259	0.6211	\$97.00	\$14.00	\$251.00	\$125.00
1/2-14	0.7784	0.7851	0.7769	0.7718	\$97.00	\$14.00	\$251.00	\$125.00
3/4-14	0.9889	0.9958	0.9873	0.9820	\$97.00	\$17.00	\$260.00	\$136.00
1.0 - 11 1/2	1.2386	1.2462	1.2369	1.2311	\$120.00	\$20.00	\$287.00	\$164.00
1 1/4 - 11 1/2	1.5834	1.5912	1.5816	1.5756	\$134.00	\$20.00	\$322.00	\$186.00
1 1/2 - 11 1/2	1.8223	1.8302	1.8205	1.8144	\$164.00	\$20.00	\$356.00	\$221.00
2.0 - 11 1/2	2.2963	2.3044	2.2944	2.2882	\$191.00	\$20.00	\$416.00	\$260.00
2 1/2 - 8	2.7622	2.7720	2.7600	2.7526	\$209.00	\$23.00	\$525.00	\$301.00
3.0 - 8	3.3885	3.3984	3.3862	3.3786	\$251.00	\$23.00	\$573.00	\$368.00

## NPSF Plug

Size	Go or High	Handle
1/8 - 27	\$104.00	12
1/4 - 18	\$104.00	12
3/8 - 18	\$104.00	12
1/2 - 14	\$104.00	14
3/4 - 14	\$104.00	14
1.0 - 11 1/2	\$128.00	17

# Cylindrical Gages Taperlock Plugs

Master - Split Tolerance  
Go - Plus Tolerance  
Nogo - Minus Tolerance



			Standard Go Member				Standard Nogo Member					
Size Range	Class	Tol.	LGTH.	Quantity			LGTH.	Quantity			Handle	
				1	2-4	5-10		1	2-4	5-10	Size	Price
	XXX	.000010		\$126.00	\$112.00	\$105.00		\$121.00	\$110.00	\$104.00		
.105" to .150"	XX	.000020	3/8"	\$63.00	\$56.00	\$53.00	7/32"	\$61.00	\$55.00	\$52.00	00	\$14.00
2.67 to 3.81mm	X	.000040	9.5mm	\$49.00	\$44.00	\$41.00	5.6mm	\$48.00	\$44.00	\$41.00		
	Y & Z			\$46.00	\$43.00	\$40.00		\$45.00	\$40.00	\$37.00		
	XXX	.000010		\$126.00	\$112.00	\$105.00		\$122.00	\$110.00	\$104.00		
.150" to .230"	XX	.000020	13/32"	\$63.00	\$56.00	\$53.00	9/32"	\$61.00	\$55.00	\$52.00	0	\$14.00
3.81 to 5.84mm	X	.000040	10.3mm	\$49.00	\$44.00	\$43.00	7.1mm	\$48.00	\$44.00	\$41.00		
	Y & Z			\$45.00	\$43.00	\$40.00		\$45.00	\$41.00	\$37.00		
	XXX	.000010		\$127.00	\$113.00	\$106.00		\$125.00	\$111.00	\$104.00		
.230" to .365"	XX	.000020	3/4"	\$61.00	\$57.00	\$53.00	5/16"	\$61.00	\$55.00	\$52.00	1	\$14.00
5.84 to 9.27mm	X	.000040	19.1mm	\$50.00	\$45.00	\$43.00	7.9mm	\$48.00	\$44.00	\$41.00		
	Y & Z			\$46.00	\$43.00	\$40.00		\$46.00	\$41.00	\$37.00		
	XXX	.000010		\$129.00	\$115.00	\$110.00		\$127.00	\$113.00	\$106.00		
.365" to .510"	XX	.000020	1"	\$64.00	\$57.00	\$55.00	3/8"	\$63.00	\$57.00	\$53.00	2	\$14.00
9.27 to 12.95mm	X	.000040	25.4mm	\$50.00	\$45.00	\$43.00	9.5mm	\$49.00	\$45.00	\$43.00		
	Y & Z			\$48.00	\$44.00	\$41.00		\$46.00	\$43.00	\$40.00		
	XXX	.000010		\$136.00	\$122.00	\$115.00		\$134.00	\$120.00	\$113.00		
.510" to .825"	XX	.000020	1 1/4"	\$69.00	\$61.00	\$59.00	1/2"	\$67.00	\$60.00	\$57.00	3	\$14.00
12.95 to 20.96mm	X	.000040	31.8mm	\$52.00	\$48.00	\$45.00	12.7mm	\$52.00	\$48.00	\$45.00		
	Y & Z			\$51.00	\$46.00	\$44.00		\$50.00	\$45.00	\$43.00		
	XXX	.000015		\$142.00	\$128.00	\$121.00		\$138.00	\$126.00	\$119.00		
.825" to 1.135"	XX	.000030	1 1/2"	\$72.00	\$64.00	\$60.00	5/8"	\$71.00	\$63.00	\$59.00	4	\$17.00
20.96 to 28.83mm	X	.000060	38.1mm	\$55.00	\$50.00	\$48.00	15.9mm	\$53.00	\$49.00	\$46.00		
	Y & Z			\$52.00	\$48.00	\$45.00		\$51.00	\$46.00	\$44.00		
	XXX	.000015		\$148.00	\$133.00	\$126.00		\$145.00	\$129.00	\$122.00		
1.135" to 1.510"	XX	.000030	1 5/8"	\$73.00	\$67.00	\$63.00	3/4"	\$72.00	\$66.00	\$61.00	5	\$20.00
28.83 to 38.35mm	X	.000060	41.3mm	\$57.00	\$51.00	\$49.00	19.1mm	\$56.00	\$50.00	\$48.00		
	Y & Z			\$53.00	\$49.00	\$46.00		\$52.00	\$48.00	\$45.00		

# Cylindrical Gages

## Reversible Plugs

Master - Split Tolerance  
Go - Plus Tolerance  
Nogo - Minus Tolerance



Size Range	Class	Tol.	Steel Go/No Go Quantity			Chrome Go/No Go Quantity			Handle	
			1	2-4	5-10	1	2-4	5-10	Size	Price
	XX	.000020	\$52.00	\$43.00	\$33.00	-	-	-		
.010" to .030"	X	.000040	\$44.00	\$33.00	\$23.00	-	-	-	1W	\$14.00
0.25 to 0.762mm	Y	.000070	\$40.00	\$30.00	\$21.00	-	-	-		
	Z	.0001	\$35.00	\$29.00	\$18.00	-	-	-		
	XX	.000020	\$28.00	\$22.00	\$20.00	\$36.00	\$29.00	\$27.00		
.030" to .075"	X	.000040	\$21.00	\$18.00	\$15.00	\$27.00	\$21.00	\$20.00	1W	\$14.00
0.762 to 1.91mm	Y	.000070	\$20.00	\$15.00	\$14.00	\$26.00	\$20.00	\$18.00		
	Z	.0001	\$17.00	\$14.00	\$12.00	\$21.00	\$18.00	\$15.00		
	XX	.000020	\$30.00	\$26.00	\$21.00	\$40.00	\$32.00	\$28.00		
.075" to .180"	X	.000040	\$26.00	\$21.00	\$19.00	\$32.00	\$27.00	\$22.00	2W	\$14.00
1.91 to 4.57mm	Y	.000070	\$25.00	\$20.00	\$17.00	\$30.00	\$26.00	\$20.00		
	Z	.0001	\$20.00	\$17.00	\$14.00	\$26.00	\$20.00	\$18.00		
	XX	.000020	\$32.00	\$27.00	\$22.00	\$43.00	\$34.00	\$29.00		
.180" to .281"	X	.000040	\$27.00	\$21.00	\$19.00	\$34.00	\$28.00	\$23.00	3W	\$17.00
4.57 to 7.14mm	Y	.000070	\$26.00	\$19.00	\$18.00	\$32.00	\$23.00	\$21.00		
	Z	.0001	\$20.00	\$17.00	\$15.00	\$27.00	\$21.00	\$19.00		
	XX	.000020	\$35.00	\$29.00	\$25.00	\$45.00	\$36.00	\$32.00		
.281" to .406"	X	.000040	\$28.00	\$23.00	\$20.00	\$37.00	\$30.00	\$27.00	4W	\$17.00
7.14 to 10.31mm	Y	.000070	\$27.00	\$22.00	\$19.00	\$34.00	\$29.00	\$26.00		
	Z	.0001	\$21.00	\$18.00	\$15.00	\$27.00	\$22.00	\$19.00		
	XX	.000020	\$36.00	\$30.00	\$26.00	\$48.00	\$37.00	\$34.00		
.406" to .510"	X	.000040	\$30.00	\$26.00	\$22.00	\$38.00	\$32.00	\$29.00	5W	\$19.00
10.31 to 12.95mm	Y	.000070	\$29.00	\$22.00	\$20.00	\$36.00	\$30.00	\$27.00		
	Z	.0001	\$22.00	\$19.00	\$17.00	\$29.00	\$23.00	\$20.00		
	XX	.000020	\$37.00	\$30.00	\$28.00	\$50.00	\$41.00	\$35.00		
.510" to .635"	X	.000040	\$33.00	\$27.00	\$23.00	\$43.00	\$34.00	\$30.00	6W	\$20.00
12.95 to 16.13mm	Y	.000070	\$30.00	\$26.00	\$21.00	\$37.00	\$32.00	\$28.00		
	Z	.0001	\$23.00	\$20.00	\$18.00	\$32.00	\$27.00	\$22.00		
	XX	.000020	\$41.00	\$33.00	\$29.00	\$51.00	\$44.00	\$36.00		
.635" to .760"	X	.000040	\$35.00	\$28.00	\$26.00	\$44.00	\$35.00	\$32.00	7W	\$23.00
16.13 to 19.30mm	Y	.000070	\$32.00	\$26.00	\$22.00	\$42.00	\$33.00	\$30.00		
	Z	.0001	\$27.00	\$21.00	\$19.00	\$33.00	\$28.00	\$23.00		
			\$64.00	\$50.00	\$48.00	\$83.00	\$64.00	\$60.00		
.760" to 1.010"	See Gagemakers		\$53.00	\$41.00	\$37.00	\$71.00	\$53.00	\$49.00	8W	\$29.00
19.30 to 25.65mm	Tolerance Chart		\$50.00	\$37.00	\$34.00	\$66.00	\$49.00	\$45.00		
			\$45.00	\$35.00	\$33.00	\$57.00	\$46.00	\$44.00		

# Cylindrical Gages Trilock Plain Plugs



Master - Split Tolerance

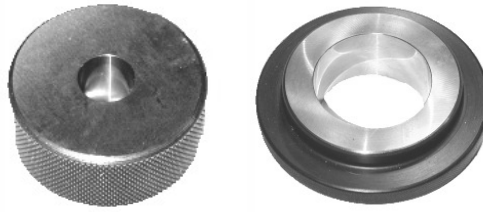
Go - Plus Tolerance

Nogo - Minus Tolerance

Chrome Plated - Add 30%

Size Range	Class	Tol.	Standard Go Member				Standard Nogo Member				Handle	
			LGTH.	1	2-4	5-10	LGTH.	1	2-4	5-10	Size	Price
.760" to .947" 19.30 to 24.05mm	XXX	.000010		\$179.00	\$159.00	\$152.00		\$175.00	\$158.00	\$150.00		
	XX	.000020	1 1/4"	\$90.00	\$80.00	\$76.00	3/4"	\$90.00	\$79.00	\$76.00	2 1/2	\$15.00
	X	.000040	31.8mm	\$69.00	\$61.00	\$59.00	19.1mm	\$69.00	\$61.00	\$58.00		
	Y & Z			\$66.00	\$59.00	\$57.00		\$65.00	\$59.00	\$57.00		
.947" to 1.135" 24.05 to 28.83mm	XXX	.000015		\$183.00	\$166.00	\$156.00		\$179.00	\$161.00	\$153.00		
	XX	.000030	1 3/8"	\$92.00	\$83.00	\$79.00	3/4"	\$91.00	\$80.00	\$76.00	3 1/2	\$15.00
	X	.000060	34.9mm	\$73.00	\$65.00	\$60.00	19.1mm	\$69.00	\$64.00	\$59.00		
	Y & Z			\$68.00	\$61.00	\$58.00		\$66.00	\$59.00	\$57.00		
1.135" to 1.510" 28.83 to 38.35mm	XXX	.000015		\$184.00	\$166.00	\$157.00		\$182.00	\$164.00	\$155.00		
	XX	.000030	1 1/2"	\$94.00	\$83.00	\$79.00	3/4"	\$91.00	\$82.00	\$78.00	4 1/2	\$18.00
	X	.000060	38.1mm	\$73.00	\$65.00	\$61.00	19.1mm	\$71.00	\$64.00	\$59.00		
	Y & Z			\$69.00	\$61.00	\$58.00		\$66.00	\$60.00	\$58.00		
1.510" to 2.010" 38.35 to 51.05mm	XXX	.000020		\$243.00	\$218.00	\$207.00		\$234.00	\$211.00	\$205.00		
	XX	.000040	1 7/8"	\$121.00	\$111.00	\$103.00	7/8"	\$118.00	\$106.00	\$101.00	5 1/2	\$21.00
	X	.000080	47.6mm	\$95.00	\$84.00	\$80.00	22.2mm	\$91.00	\$82.00	\$78.00		
	Y & Z			\$90.00	\$80.00	\$76.00		\$87.00	\$78.00	\$74.00		
2.010" to 2.510" 51.05 to 63.75mm	XXX	.000020		\$268.00	\$242.00	\$228.00		\$239.00	\$216.00	\$203.00		
	XX	.000040	2"	\$135.00	\$113.00	\$109.00	7/8"	\$120.00	\$109.00	\$102.00	6	\$22.00
	X	.000080	50.8mm	\$97.00	\$88.00	\$83.00	22.2mm	\$94.00	\$83.00	\$79.00		
	Y & Z			\$94.00	\$84.00	\$79.00		\$88.00	\$79.00	\$75.00		
2.510" to 3.010" 63.75 to 76.45mm	XXX	.000025		\$311.00	\$280.00	\$264.00		\$268.00	\$241.00	\$227.00		
	XX	.000050	2"	\$156.00	\$140.00	\$133.00	1"	\$133.00	\$120.00	\$114.00	7	\$22.00
	X	.0001	50.8mm	\$104.00	\$95.00	\$90.00	25.4mm	\$95.00	\$84.00	\$80.00		
	Y & Z			\$96.00	\$88.00	\$82.00		\$91.00	\$80.00	\$76.00		
3.010" to 3.510" 76.45 to 89.15mm	XXX	.000025		\$497.00	\$448.00	\$421.00		\$394.00	\$355.00	\$334.00		
	XX	.000050	2"	\$249.00	\$225.00	\$211.00	1"	\$197.00	\$176.00	\$167.00	7	\$26.00
	X	.0001	50.8mm	\$191.00	\$173.00	\$164.00	25.4mm	\$152.00	\$137.00	\$129.00		
	Y & Z			\$183.00	\$165.00	\$156.00		\$145.00	\$130.00	\$122.00		
3.510" to 4.010" 89.15 to 101.85mm	XXX	.000025		\$517.00	\$466.00	\$440.00		\$401.00	\$360.00	\$341.00		
	XX	.000050	2 1/8"	\$260.00	\$234.00	\$220.00	1"	\$201.00	\$182.00	\$171.00	7	\$26.00
	X	.0001	54.0mm	\$201.00	\$180.00	\$171.00	25.4mm	\$155.00	\$138.00	\$132.00		
	Y & Z			\$190.00	\$172.00	\$161.00		\$148.00	\$133.00	\$127.00		
4.010" to 4.510" 101.85 to 114.55mm	XXX	.000025		\$534.00	\$480.00	\$454.00		\$410.00	\$382.00	\$348.00		
	XX	.000050	2 1/8"	\$267.00	\$242.00	\$227.00	1"	\$203.00	\$184.00	\$174.00	7	\$26.00
	X	.0001	54.0mm	\$206.00	\$186.00	\$175.00	25.4mm	\$157.00	\$141.00	\$135.00		
	Y & Z			\$197.00	\$176.00	\$167.00		\$150.00	\$136.00	\$129.00		
4.510" to 5.010" 114.55 to 127.25mm	XXX	.000033		\$677.00	\$609.00	\$575.00		\$457.00	\$412.00	\$388.00		
	XX	.000065	2 1/8"	\$340.00	\$305.00	\$288.00	1"	\$229.00	\$207.00	\$196.00	7	\$26.00
	X	.00013	54.0mm	\$263.00	\$235.00	\$224.00	25.4mm	\$166.00	\$149.00	\$141.00		
	Y & Z			\$174.00	\$225.00	\$211.00		\$158.00	\$141.00	\$135.00		
5.010" to 5.510" 127.25 to 139.95mm	XXX	.000033		\$694.00	\$624.00	\$589.00		\$529.00	\$477.00	\$450.00		
	XX	.000065	2 1/8"	\$348.00	\$312.00	\$296.00	1"	\$265.00	\$239.00	\$226.00	7	\$26.00
	X	.00013	54.0mm	\$268.00	\$242.00	\$228.00	25.4mm	\$174.00	\$156.00	\$148.00		
	Y & Z			\$255.00	\$229.00	\$217.00		\$161.00	\$147.00	\$137.00		
5.510" to 6.010" 139.95 to 152.65mm	XXX	.000033		\$718.00	\$647.00	\$609.00		\$598.00	\$538.00	\$509.00		
	XX	.000065	2 1/8"	\$359.00	\$324.00	\$305.00	1"	\$325.00	\$296.00	\$278.00	7	\$26.00
	X	.00013	54.0mm	\$278.00	\$249.00	\$235.00	25.4mm	\$209.00	\$189.00	\$176.00		
	Y & Z			\$264.00	\$239.00	\$225.00		\$196.00	\$175.00	\$167.00		
6.010" to 6.510" 152.65 to 165.35mm	XXX	.000033		\$751.00	\$676.00	\$639.00		\$649.00	\$586.00	\$552.00		
	XX	.000065	2 1/8"	\$375.00	\$339.00	\$320.00	1"	\$325.00	\$296.00	\$278.00	7	\$26.00
	X	.00013	54.0mm	\$289.00	\$262.00	\$247.00	25.4mm	\$226.00	\$205.00	\$193.00		
	Y & Z			\$279.00	\$249.00	\$234.00		\$212.00	\$191.00	\$182.00		
6.510" to 7.010" 165.35 to 178.05mm	XXX	.000040		\$1,138.00	\$1,025.00	\$968.00		\$633.00	\$571.00	\$540.00		
	XX	.000080	2 1/8"	\$570.00	\$513.00	\$485.00	1"	\$339.00	\$286.00	\$270.00	7	\$26.00
	X	.00016	54.0mm	\$439.00	\$395.00	\$368.00	25.4mm	\$245.00	\$222.00	\$209.00		
	Y & Z			\$419.00	\$377.00	\$357.00		\$234.00	\$210.00	\$198.00		
7.010" to 7.510" 178.05 to 190.75mm	XXX	.000040		\$1,171.00	\$1,055.00	\$996.00		\$728.00	\$657.00	\$619.00		
	XX	.000080	2 1/8"	\$587.00	\$527.00	\$498.00	1"	\$365.00	\$328.00	\$311.00	7	\$26.00
	X	.00016	54.0mm	\$452.00	\$408.00	\$385.00	25.4mm	\$271.00	\$244.00	\$229.00		
	Y & Z			\$431.00	\$387.00	\$371.00		\$262.00	\$235.00	\$224.00		
7.510" to 8.010" 190.75 to 203.45mm	XXX	.000040		\$1,230.00	\$1,106.00	\$1,045.00		\$792.00	\$713.00	\$673.00		
	XX	.000080	2 1/8"	\$615.00	\$554.00	\$524.00	1"	\$397.00	\$358.00	\$339.00	7	\$26.00
	X	.00016	54.0mm	\$474.00	\$428.00	\$403.00	25.4mm	\$298.00	\$268.00	\$253.00		
	Y & Z			\$452.00	\$405.00	\$385.00		\$289.00	\$262.00	\$247.00		

# Cylindrical Gages Rings



Master - Split Tolerance  
Go - Minus Tolerance  
Nogo - Plus Tolerance

Size Range	Class	Tol.	Standard A.G.D. Blank		Steel		Chrome	
			Length	O.D.	1	2 +	1	2 +
.015" to .025" .0381 to .635mm	XXX	.000010			N.A.	N.A.	-	-
	XX	.000020	#000 Blank		\$289.00	\$240.00	-	-
	X	.000040	3/32"	15/16"	\$229.00	\$195.00	-	-
	Y & Z		2.37mm	23.8mm	\$218.00	\$190.00	-	-
.025" to .040" .635 to 1.02mm	XXX	.000010			N.A.	N.A.	-	-
	XX	.000020	#000 Blank		\$259.00	\$221.00	-	-
	X	.000040	3/32"	15/16"	\$213.00	\$182.00	-	-
	Y & Z		2.37mm	23.8mm	\$199.00	\$174.00	-	-
.040" to .070" 1.02 to 1.78mm	XXX	.000010			Upon Request	Upon Request	-	-
	XX	.000020	#00 Blank		\$174.00	\$157.00	-	-
	X	.000040	3/16"	15/16"	\$143.00	\$128.00	-	-
	Y & Z		4.8mm	23.8mm	\$140.00	\$127.00	-	-
.070" to .150" 1.78 to 3.81mm	XXX	.000010			Upon Request	Upon Request	-	-
	XX	.000020	#00 Blank		\$160.00	\$143.00	-	-
	X	.000040	3/16"	15/16"	\$132.00	\$119.00	-	-
	Y & Z		4.8mm	23.8mm	\$128.00	\$117.00	-	-
.150" to .230" 3.81 to 5.84mm	XXX	.000010			Upon Request	Upon Request	Upon Request	Upon Request
	XX	.000020	#0 Blank		\$120.00	\$109.00	\$157.00	\$141.00
	X	.000040	3/8"	15/16"	\$110.00	\$98.00	\$142.00	\$127.00
	Y & Z		9.5mm	23.8mm	\$104.00	\$95.00	\$135.00	\$121.00
.230" to .365" 5.84 to 9.27mm	XXX	.000010			Upon Request	Upon Request	Upon Request	Upon Request
	XX	.000020	#1 Blank		\$105.00	\$95.00	\$138.00	\$124.00
	X	.000040	9/16"	1 1/8"	\$96.00	\$88.00	\$125.00	\$113.00
	Y & Z		14.3mm	28.6mm	\$91.00	\$82.00	\$120.00	\$105.00
.365" to .510" 9.27 to 12.95mm	XXX	.000010			Upon Request	Upon Request	Upon Request	Upon Request
	XX	.000020	#2 Blank		\$112.00	\$101.00	\$144.00	\$132.00
	X	.000040	3/4"	1 3/8"	\$102.00	\$91.00	\$132.00	\$118.00
	Y & Z		19.1mm	34.9mm	\$96.00	\$88.00	\$126.00	\$113.00
.510" to .825" 12.95 to 20.96mm	XXX	.000010			Upon Request	Upon Request	Upon Request	Upon Request
	XX	.000020	#3 Blank		\$115.00	\$103.00	\$148.00	\$134.00
	X	.000040	15/16"	1 3/4"	\$104.00	\$94.00	\$135.00	\$122.00
	Y & Z		23.8mm	44.4mm	\$99.00	\$90.00	\$129.00	\$117.00
.825" to 1.135" 20.96 to 28.83mm	XXX	.000015			Upon Request	Upon Request	Upon Request	Upon Request
	XX	.000030	#4 Blank		\$118.00	\$105.00	\$155.00	\$140.00
	X	.000060	1 1/8"	2 1/8"	\$107.00	\$96.00	\$140.00	\$126.00
	Y & Z		28.6mm	54.0mm	\$102.00	\$92.00	\$134.00	\$120.00
1.135" to 1.510" 28.83 to 38.35mm	XXX	.000015			Upon Request	Upon Request	Upon Request	Upon Request
	XX	.000030	#5 Blank		\$145.00	\$133.00	\$193.00	\$172.00
	X	.000060	1 5/16"	2 1/2"	\$122.00	\$110.00	\$159.00	\$142.00
	Y & Z		33.3mm	63.5mm	\$115.00	\$104.00	\$150.00	\$136.00
1.510" to 2.010" 38.35 to 51.05mm	XXX	.000020			Upon Request	Upon Request	Upon Request	Upon Request
	XX	.000040	#6 Blank		\$176.00	\$159.00	\$230.00	\$207.00
	X	.000080	1 1/2"	4"	\$161.00	\$143.00	\$209.00	\$188.00
	Y & Z		38.1mm	101.6mm	\$152.00	\$140.00	\$198.00	\$181.00
2.010" to 2.510" 51.05 to 63.75mm	XXX	.000020			Upon Request	Upon Request	Upon Request	Upon Request
	XX	.000040	#7 Blank		\$218.00	\$196.00	\$283.00	\$255.00
	X	.000080	1 1/2"	4 1/2"	\$182.00	\$164.00	\$235.00	\$213.00
	Y & Z		38.1mm	114.3mm	\$165.00	\$148.00	\$214.00	\$193.00
2.510" to 3.010" 63.75 to 76.45mm	XXX	.000025			Upon Request	Upon Request	Upon Request	Upon Request
	XX	.000050	#8 Blank		\$252.00	\$227.00	\$327.00	\$295.00
	X	.0001	1 1/2"	5"	\$212.00	\$191.00	\$274.00	\$248.00
	Y & Z		38.1mm	127.0mm	\$189.00	\$170.00	\$245.00	\$220.00
3.010" to 3.510" 76.45 to 89.15mm	XXX	.000025			Upon Request	Upon Request	Upon Request	Upon Request
	XX	.000050	#9 Blank		\$297.00	\$270.00	\$388.00	\$351.00
	X	.0001	1 1/2"	5 1/2"	\$248.00	\$224.00	\$321.00	\$290.00
	Y & Z		38.1mm	139.7mm	\$224.00	\$199.00	\$290.00	\$262.00
3.510" to 4.010" 89.15 to 101.85mm	XXX	.000025			Upon Request	Upon Request	Upon Request	Upon Request
	XX	.000050	#10 Blank		\$340.00	\$305.00	\$443.00	\$400.00
	X	.0001	1 1/2"	6 3/8"	\$280.00	\$250.00	\$362.00	\$326.00
	Y & Z		38.1mm	161.9mm	\$255.00	\$228.00	\$329.00	\$296.00

Continued...

# Cylindrical Ring Gages

Continued...

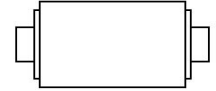
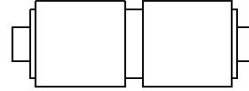
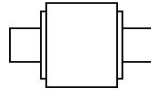
Master - Split Tolerance  
Go - Minus Tolerance  
Nogo - Plus Tolerance

Size Range	Class	Tol.	Standard A.G.D. Blank		Steel		Chrome	
			Length	O.D.	1	2 +	1	2 +
4.010" to 4.760"	See Gagemakers Chart		#11 Blank		Upon Request	Upon Request	Upon Request	Upon Request
101.85 to 120.90mm			1 1/2"	7 1/4"	\$407.00	\$366.00	\$527.00	\$476.00
			38.1mm	184.2mm	\$339.00	\$304.00	\$440.00	\$396.00
					\$303.00	\$273.00	\$394.00	\$352.00
4.760" to 5.510"	XXX	.000033	#12 Blank		Upon Request	Upon Request	Upon Request	Upon Request
120.90 to 139.95mm	XX	.000065	#12 Blank		\$544.00	\$490.00	\$706.00	\$635.00
	X	.00013	1 1/2"	8 1/4"	\$453.00	\$408.00	\$588.00	\$531.00
	Y & Z		38.1mm	209.6mm	\$408.00	\$366.00	\$530.00	\$477.00
5.510" to 6.260"	XXX	.000033	#13 Blank		Upon Request	Upon Request	Upon Request	Upon Request
139.95 to 159.00mm	XX	.000065	#13 Blank		\$620.00	\$556.00	\$807.00	\$725.00
	X	.00013	1 1/2"	9 1/4"	\$516.00	\$466.00	\$672.00	\$604.00
	Y & Z		38.1mm	235.0mm	\$467.00	\$420.00	\$608.00	\$545.00
6.260" to 7.010"	XXX	.000040	#14 Blank		Upon Request	Upon Request	Upon Request	Upon Request
159.00 to 178.05mm	XX	.000080	#14 Blank					
	X	.00016	1 1/2"	10 1/4"				
	Y & Z		38.1mm	260.4mm				
7.010" to 7.760"	XXX	.000040	#15 Blank		Upon Request	Upon Request	Upon Request	Upon Request
178.05 to 197.10mm	XX	.000080	#15 Blank					
	X	.00016	1 1/2"	11 1/4"				
	Y & Z		38.1mm	285.8mm				
7.760" to 8.510"	XXX	.000040	#16 Blank		Upon Request	Upon Request	Upon Request	Upon Request
197.10 to 216.15mm	XX	.000080	#16 Blank					
	X	.00016	1 1/2"	12 1/4"				
	Y & Z		38.1mm	311.2mm				
8.510" to 9.260"	See Gagemakers Chart		#17 Blank		Upon Request	Upon Request	Upon Request	Upon Request
216.15 to 235.20mm			1 1/2"	13 1/4"				
			38.1mm	336.6mm				
9.260" to 10.010"	XXX	.000050	#18 Blank		Upon Request	Upon Request	Upon Request	Upon Request
235.20 to 254.25mm	XX	.0001	#18 Blank					
	X	.0002	1 1/2"	14 1/2"				
	Y & Z		38.1mm	362.0mm				
10.010" to 10.760"	XXX	.000050	#19 Blank		Upon Request	Upon Request	Upon Request	Upon Request
254.25 to 273.30mm	XX	.0001	#19 Blank					
	X	.0002	1 1/2"	15 1/2"				
	Y & Z		38.1mm	387.4mm				
10.760" to 11.510"	XXX	.000050	#20 Blank		Upon Request	Upon Request	Upon Request	Upon Request
273.30 to 292.35mm	XX	.0001	#20 Blank					
	X	.0002	1 1/2"	16 1/4"				
	Y & Z		38.1mm	412.8mm				
11.510" to 12.260"	XXX	.000075	#21 Blank		Upon Request	Upon Request	Upon Request	Upon Request
292.35 to 311.40mm	XX	.00015	#21 Blank					
	X	.0003	1 1/2"	17 1/4"				
	Y & Z		38.1mm	438.2mm				
12.260" to 13.010"	XXX	.000075	#22 Blank		Upon Request			
311.40 to 330.45mm	XX	.00015	#22 Blank					
	X	.0003	1 1/2"	18 1/4"				
	Y & Z		38.1mm	463.6mm				
13.010" to 13.760"	XXX	.000075	#23 Blank		Upon Request			
330.45 to 349.50mm	XX	.00015	#23 Blank					
	X	.0003	1 1/2"	19 1/4"				
	Y & Z		38.1mm	489.0mm				
13.760" to 14.510"	XXX	.000075	#24 Blank		Upon Request			
349.50 to 368.55mm	XX	.00015	#24 Blank					
	X	.0003	1 1/2"	20 1/4"				
	Y & Z		38.1mm	514.4mm				
14.510" to 15.260"	XXX	.0001	#25 Blank		Upon Request			
368.55 to 387.60mm	XX	.0002	#25 Blank					
	X	.0004	1 1/2"	21 1/4"				
	Y & Z		38.1mm	539.8mm				
15.260" to 16.010"	XXX	.0001	#26 Blank		Upon Request			
387.60 to 406.65mm	XX	.0002	#26 Blank					
	X	.0004	1 1/2"	22 1/4"				
	Y & Z		38.1mm	565.2mm				

Rings above 5.510 will not be supplied with tapped holes for ball handles unless specified. #7 ball handles are available for \$24.00 each.



# Master Discs



Size Range	Class	Tol.	Bilateral Tolerance			Go Minus / Nogo Plus			Bilateral Tolerance		
			Length	Style #3		Length	Style #2		Length	Style #1	
				Steel	Chrome		Steel	Chrome		Steel	Chrome
	XXX	.000010		Upon Request	Upon Request		Upon Request	Upon Request		Upon Request	Upon Request
.150" to .230"	XX	.000020	7/16"	\$90.00	\$115.00	7/8"	\$173.00	\$225.00	7/8"	\$103.00	\$134.00
3.81 to 5.84mm	X	.000040	11.1mm	\$82.00	\$107.00	22.2mm	\$157.00	\$203.00	22.2mm	\$95.00	\$122.00
	Y & Z			\$78.00	\$103.00		\$149.00	\$194.00		\$89.00	\$114.00
	XXX	.000010		Upon Request	Upon Request		Upon Request	Upon Request		Upon Request	Upon Request
.230" to .365"	XX	.000020	1/2"	\$92.00	\$119.00	1"	\$174.00	\$226.00	1"	\$104.00	\$135.00
5.84 to 9.27mm	X	.000040	12.7mm	\$83.00	\$109.00	25.4mm	\$158.00	\$204.00	25.4mm	\$96.00	\$124.00
	Y & Z			\$79.00	\$103.00		\$150.00	\$195.00		\$90.00	\$114.00
	XXX	.000010		Upon Request	Upon Request		Upon Request	Upon Request		Upon Request	Upon Request
.365" to .510"	XX	.000020	9/16"	\$95.00	\$121.00	1 1/8"	\$175.00	\$228.00	1 1/8"	\$105.00	\$136.00
9.27 to 12.95mm	X	.000040	14.3mm	\$83.00	\$110.00	28.6mm	\$160.00	\$206.00	28.6mm	\$97.00	\$124.00
	Y & Z			\$79.00	\$104.00		\$151.00	\$197.00		\$90.00	\$115.00
	XXX	.000010		Upon Request	Upon Request		Upon Request	Upon Request		Upon Request	Upon Request
.510" to .825"	XX	.000020	5/8"	\$96.00	\$124.00	1 1/4"	\$178.00	\$229.00	1 1/4"	\$107.00	\$137.00
12.95 to 20.96mm	X	.000040	15.9mm	\$84.00	\$110.00	31.8mm	\$161.00	\$209.00	31.8mm	\$97.00	\$126.00
	Y & Z			\$80.00	\$105.00		\$152.00	\$198.00		\$92.00	\$119.00
	XXX	.000015		Upon Request	Upon Request		Upon Request	Upon Request		Upon Request	Upon Request
.825" to 1.135"	XX	.000030	11/16"	\$102.00	\$133.00	1 3/8"	\$189.00	\$244.00	1 3/8"	\$110.00	\$141.00
20.96 to 28.83mm	X	.000060	17.5mm	\$87.00	\$112.00	34.9mm	\$164.00	\$211.00	34.9mm	\$99.00	\$128.00
	Y & Z			\$82.00	\$107.00		\$157.00	\$202.00		\$96.00	\$124.00
	XXX	.000015		Upon Request	Upon Request		Upon Request	Upon Request		Upon Request	Upon Request
1.135" to 1.510"	XX	.000030	13/16"	\$111.00	\$142.00	1 5/8"	\$209.00	\$271.00	1 5/8"	\$121.00	\$158.00
28.83 to 38.35mm	X	.000060	20.6mm	\$88.00	\$114.00	41.3mm	\$166.00	\$216.00	41.3mm	\$103.00	\$133.00
	Y & Z			\$83.00	\$110.00		\$159.00	\$206.00		\$98.00	\$127.00
	XXX	.000020		Upon Request	Upon Request		Upon Request	Upon Request		Upon Request	Upon Request
1.510" to 2.010"	XX	.000040	7/8"	\$127.00	\$165.00	2"	\$239.00	\$310.00	2"	\$148.00	\$190.00
38.35 to 51.05mm	X	.000080	22.2mm	\$113.00	\$148.00	50.8mm	\$214.00	\$281.00	50.8mm	\$119.00	\$155.00
	Y & Z			\$109.00	\$140.00		\$206.00	\$266.00		\$113.00	\$148.00
	XXX	.000020		Upon Request	Upon Request		Upon Request	Upon Request		Upon Request	Upon Request
2.010" to 2.510"	XX	.000040	7/8"	\$148.00	\$191.00	2"	\$276.00	\$360.00	2"	\$159.00	\$206.00
51.05 to 63.75mm	X	.000080	22.2mm	\$114.00	\$150.00	50.8mm	\$219.00	\$286.00	50.8mm	\$134.00	\$174.00
	Y & Z			\$111.00	\$142.00		\$210.00	\$272.00		\$127.00	\$165.00
	XXX	.000025		Upon Request	Upon Request		Upon Request	Upon Request		Upon Request	Upon Request
2.510" to 3.010"	XX	.000050	1"	\$172.00	\$222.00	2 1/4"	\$329.00	\$426.00	2"	\$188.00	\$245.00
63.75 to 76.45mm	X	.0001	25.4mm	\$142.00	\$187.00	57.2mm	\$272.00	\$353.00	57.2mm	\$149.00	\$192.00
	Y & Z			\$136.00	\$179.00		\$259.00	\$338.00		\$141.00	\$183.00
	XXX	.000025		Upon Request	Upon Request		Upon Request	Upon Request		Upon Request	Upon Request
3.010" to 3.510"	XX	.000050	1"	\$242.00	\$313.00	2 1/4"	\$458.00	\$595.00	2"	\$291.00	\$377.00
76.45 to 89.15mm	X	.0001	25.4mm	\$219.00	\$285.00	57.2mm	\$415.00	\$539.00	57.2mm	\$262.00	\$343.00
	Y & Z			\$208.00	\$272.00		\$397.00	\$515.00		\$249.00	\$324.00
	XXX	.000025		Upon Request	Upon Request		Upon Request	Upon Request		Upon Request	Upon Request
3.510" to 4.010"	XX	.000050	1"	\$246.00	\$319.00	2 1/4"	\$465.00	\$605.00	2 1/8"	\$311.00	\$403.00
89.15 to 101.85mm	X	.0001	25.4mm	\$221.00	\$291.00	57.2mm	\$423.00	\$549.00	54.0mm	\$281.00	\$365.00
	Y & Z			\$213.00	\$275.00		\$402.00	\$523.00		\$270.00	\$349.00
	XXX	.000025		Upon Request	Upon Request		Upon Request	Upon Request		Upon Request	Upon Request
4.010" to 4.510"	XX	.000050	1"	\$249.00	\$324.00	2 1/4"	\$476.00	\$618.00	2 1/8"	\$319.00	\$413.00
101.85 to 114.55mm	X	.0001	25.4mm	\$226.00	\$294.00	57.2mm	\$429.00	\$560.00	54.0mm	\$291.00	\$377.00
	Y & Z			\$216.00	\$281.00		\$410.00	\$531.00		\$275.00	\$358.00
	XXX	.000033		Upon Request	Upon Request		Upon Request	Upon Request		Upon Request	Upon Request
4.510" to 5.010"	XX	.000065	1"	\$261.00	\$342.00	2 1/4"	\$496.00	\$644.00	2 1/8"	\$398.00	\$517.00
14.55 to 127.25mm	X	.00013	25.4mm	\$239.00	\$307.00	57.2mm	\$451.00	\$587.00	54.0mm	\$360.00	\$468.00
	Y & Z			\$226.00	\$293.00		\$428.00	\$557.00		\$345.00	\$448.00
	XXX	.000033		Upon Request	Upon Request		Upon Request	Upon Request		Upon Request	Upon Request
5.010" to 5.510"	XX	.000065	1"	\$271.00	\$351.00	2 1/4"	\$523.00	\$679.00	2 1/8"	\$409.00	\$529.00
27.25 to 139.95mm	X	.00013	25.4mm	\$242.00	\$316.00	57.2mm	\$460.00	\$599.00	54.0mm	\$371.00	\$481.00
	Y & Z			\$232.00	\$299.00		\$437.00	\$568.00		\$352.00	\$458.00
	XXX	.000033		Upon Request	Upon Request		Upon Request	Upon Request		Upon Request	Upon Request
5.510" to 6.010"	XX	.000065	1"	\$286.00	\$372.00	2 1/4"	\$560.00	\$729.00	2 1/8"	\$422.00	\$547.00
39.95 to 152.65mm	X	.00013	25.4mm	\$246.00	\$320.00	57.2mm	\$467.00	\$608.00	54.0mm	\$383.00	\$496.00
	Y & Z			\$235.00	\$305.00		\$447.00	\$578.00		\$363.00	\$471.00
	XXX	.000033		Upon Request	Upon Request		Upon Request	Upon Request		Upon Request	Upon Request
6.010" to 6.510"	XX	.000065	1"	\$317.00	\$411.00	2 1/4"	\$611.00	\$793.00	2 1/8"	\$437.00	\$569.00
52.65 to 165.35mm	X	.00013	25.4mm	\$254.00	\$330.00	57.2mm	\$544.00	\$707.00	54.0mm	\$398.00	\$517.00
	Y & Z			\$242.00	\$316.00		\$519.00	\$673.00		\$380.00	\$493.00



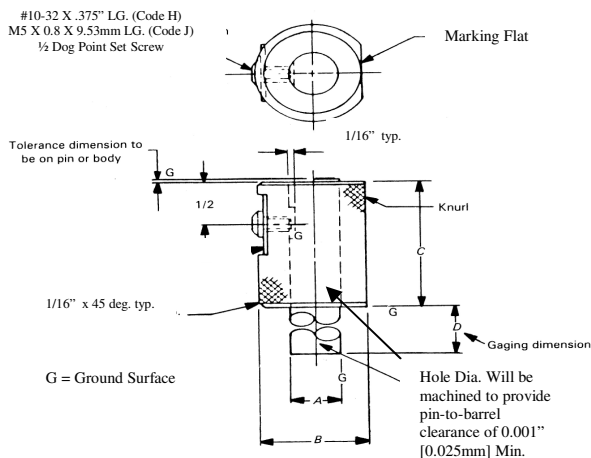
# Master Discs

Continued...

Size Range	Class	Tol.	Bilateral Tolerance			Go Minus / Nogo Plus			Bilateral Tolerance		
			Length	Style #3 Steel	Chrome	Length	Style #2 Steel	Chrome	Length	Style #1 Steel	Chrome
	XXX	.000040		Upon Request	Upon Request		Upon Request	Upon Request		Upon Request	Upon Request
6.510" to 7.010"	XX	.000080	1"	\$399.00	\$519.00	2 1/4"	\$759.00	\$987.00	2 1/8"	\$679.00	\$883.00
165.35 to 178.05mm	X	.00016	25.4mm	\$362.00	\$470.00	57.2mm	\$690.00	\$891.00	54.0mm	\$618.00	\$801.00
	Y & Z			\$345.00	\$449.00		\$654.00	\$851.00		\$588.00	\$762.00
	XXX	.000040		Upon Request	Upon Request		Upon Request	Upon Request		Upon Request	Upon Request
7.010" to 7.510"	XX	.000080	1"	\$409.00	\$529.00	2 1/4"	\$773.00	\$1,005.00	2 1/8"	\$697.00	\$904.00
178.05 to 190.75mm	X	.00016	25.4mm	\$371.00	\$481.00	57.2mm	\$701.00	\$911.00	54.0mm	\$631.00	\$819.00
	Y & Z			\$351.00	\$457.00		\$668.00	\$869.00		\$601.00	\$782.00
	XXX	.000040		Upon Request	Upon Request		Upon Request	Upon Request		Upon Request	Upon Request
7.510" to 8.010"	XX	.000080	1"	\$415.00	\$539.00	2 1/4"	\$788.00	\$1,025.00	2 1/8"	\$729.00	\$947.00
190.75 to 203.45mm	X	.00016	25.4mm	\$377.00	\$490.00	57.2mm	\$717.00	\$928.00	54.0mm	\$659.00	\$858.00
	Y & Z			\$358.00	\$465.00		\$680.00	\$885.00		\$629.00	\$817.00
	XXX	.000040		Upon Request	Upon Request						
8.010" to 8.510"	XX	.000080	1"	\$592.00	\$770.00						
203.45 to 216.15mm	X	.00016	25.4mm	\$536.00	\$698.00						
	Y & Z			\$513.00	\$665.00						
	XXX	.000040		Upon Request	Upon Request						
8.510" to 9.010"	XX	.000080	1"								
216.15 to 228.85mm	X	.00016	25.4mm								
	Y & Z										
	XXX	.000050		Upon Request	Upon Request						
9.010" to 9.510"	XX	.0001	1"								
228.85 to 241.55mm	X	.0002	25.4mm								
	Y & Z										
	XXX	.000050		Upon Request	Upon Request						
9.510" to 10.010"	XX	.0001	1"								
241.55 to 254.25mm	X	.0002	25.4mm								
	Y & Z										
	XXX	.000050		Upon Request	Upon Request						
10.010" to 10.510"	XX	.0001	1"								
254.25 to 266.95mm	X	.0002	25.4mm								
	Y & Z										
	XXX	.000050		Upon Request	Upon Request						
10.510" to 11.010"	XX	.0001	1"								
266.95 to 279.65mm	X	.0002	25.4mm								
	Y & Z										
	XXX	.000050		Upon Request	Upon Request						
11.010" to 11.510"	XX	.0001	1"								
279.65 to 292.35mm	X	.0002	25.4mm								
	Y & Z										
	XXX	.000050		Upon Request	Upon Request						
11.510" to 12.010"	XX	.0001	1"								
292.35 to 305.05mm	X	.0002	25.4mm								
	Y & Z										
	XXX	.000075		Upon Request	Upon Request						
12.010" to 12.510"	XX	.00015	1 1/8"								
305.05 to 317.75mm	X	.0003	28.6mm								
	Y & Z										
	XXX	.000075		Upon Request	Upon Request						
12.510" to 13.010"	XX	.00015	1 1/8"								
317.75 to 330.45mm	X	.0003	28.6mm								
	Y & Z										
	XXX	.000075		Upon Request	Upon Request						
13.010" to 13.510"	XX	.00015	1 1/8"								
330.45 to 343.15mm	X	.0003	28.6mm								
	Y & Z										
	XXX	.000075		Upon Request	Upon Request						
13.510" to 14.010"	XX	.00015	1 1/8"								
343.15 to 355.85mm	X	.0003	28.6mm								
	Y & Z										
	XXX	.000075		Upon Request	Upon Request						
14.010" to 14.510"	XX	.00015	1 1/8"								
355.85 to 368.55mm	X	.0003	28.6mm								
	Y & Z										

Not available in these sizes or  
consult factory for specials.

# Barrel-Type Flush Pin Gages (Inch & Metric Type)



Unless otherwise shown, all dimensions are per ASME/ANSI B47.1-1988.

STANDARD DIMENSIONS (In.)				
A	B	C	MODEL NUMBER	
PIN DIA.	BARREL DIA.	BARREL LENGTH	INCH Code H Screw	METRIC Code J Screw
0.1250 – 0.1874	1.00	1.25	LB-1250	LBM-3.175
0.1875 – 0.2499	1.00	1.25	LB-1875	LBM-4.762
0.2500 – 0.2811	1.00	1.25	LB-2500	LBM-6.350
0.2812 – 0.3124	1.00	1.25	LB-2812	LBM-7.142
0.3125 – 0.3436	1.00	1.25	LB-3125	LBM-7.937
0.3437 – 0.3749	1.00	1.25	LB-3437	LBM-8.730
0.3750 – 0.4061	1.12	1.38	LB-3750	LBM-9.525
0.4062 – 0.4374	1.12	1.38	LB-4062	LBM-10.317
0.4375 – 0.4686	1.12	1.38	LB-4375	LBM-11.112
0.4687 – 0.4999	1.12	1.75	LB-4687	LBM-11.905
0.5000 – 0.5311	1.12	1.75	LB-5000	LBM-12.700
0.5312 – 0.5624	1.25	1.75	LB-5312	LBM-13.492
0.5625 – 0.5936	1.25	1.75	LB-5625	LBM-14.288
0.5937 – 0.6249	1.25	1.75	LB-5937	LBM-15.080
0.6250 – 0.6561	1.25	1.75	LB-6250	LBM-15.875
0.6562 – 0.6874	1.25	1.75	LB-6562	LBM-16.667
0.6875 – 0.7186	1.38	2.00	LB-6875	LBM-17.462
0.7187 – 0.7499	1.38	2.00	LB-7187	LBM-18.255
0.7500 – 0.8124	1.38	2.00	LB-7500	LBM-19.050
0.8125 – 0.8749	1.38	2.50	LB-8125	LBM-20.637
0.8750 – 0.9374	1.50	2.50	LB-8750	LBM-22.225
0.9375 – 0.9999	1.50	2.50	LB-9375	LBM-23.812
1.0000 – 1.1249	1.62	2.50	LB-1.000	LBM-25.400
1.1250 – 1.2499	1.88	2.50	LB-1.1250	LBM-28.575
1.2500	1.88	2.50	LB-1.2500	LBM-31.750

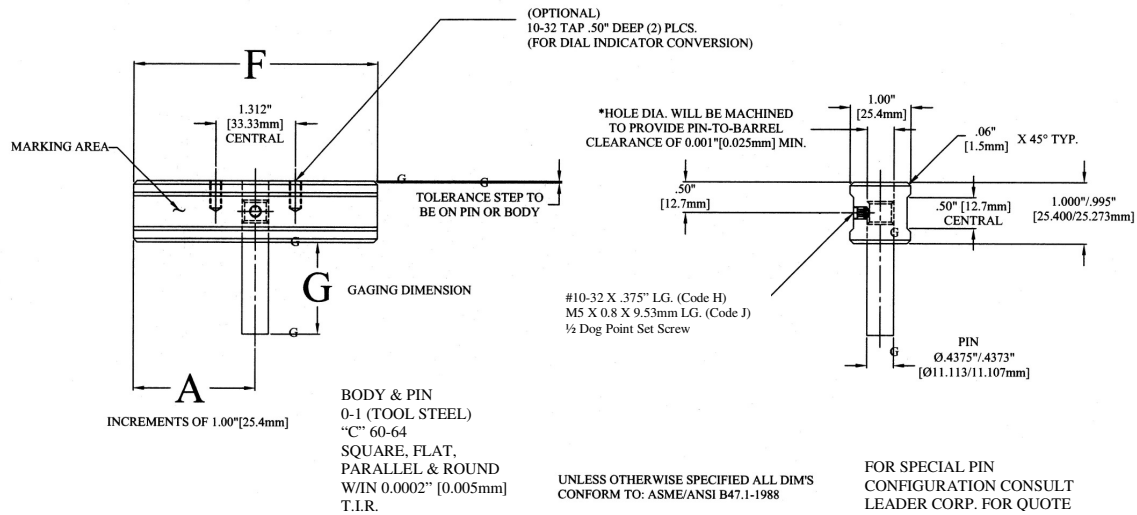
Note: Barrel & Pin  
Material: 0-1 (Tool Steel)  
Rockwell: "C" 60-64  
Grd. Surfs: Sq. Flat, Parallel & Round Within  
0.0002" T.I.R. (0.005 m.m. T.I.R.)

## TO ORDER:

- 1) Nominal Pin Dia. A = \_\_\_\_\_  
2) Minimum Gaging Dimension D = \_\_\_\_\_  
3) Maximum Gaging Dimension D = \_\_\_\_\_  
4) Tolerance Dimension to be on: Pin \_\_\_\_\_  
= \_\_\_\_\_ or Body: \_\_\_\_\_

Please consult factory for pricing.

## "LBG" SERIES BAR TYPE FLUSH PIN GAGES



### SELECTIVE GAGE BLANK DIMENSIONS

F = BAR LENGTH	MODEL NUMBER	A = PIN LOCATION	MODEL NUMBER	G = PIN LENGTH	MODEL NUMBER
2.00\" 50.8mm	LBG2 LBG2M	1.00\" 25.4mm	A1	2.00\" 50.8mm	G2
4.00\" 101.6mm	LBG4 LBG4M	2.00\" 50.8mm	A2	4.00\" 101.6mm	G4
6.00\" 152.4mm	LBG6 LBG6M	3.00\" 76.2mm	A3	6.00\" 152.4mm	G6
8.00\" 203.2mm	LBG8 LBG8M	4.00\" 101.6mm	A4	8.00\" 203.2mm	G8
10.00\" 254.0mm	LBG10 LBG10M	5.00\" 127.00mm	A5	N/A	N/A
12.00\" 304.8mm	LBG12 LBG12M	6.00\" 152.4mm	A6	N/A	N/A

### ORDERING INSTRUCTIONS:

TO ORDER GAGE BLANK, SPECIFY:

Leader Gage Model, Pin Location & Pin Length (See below for example)

Model  
LBG2

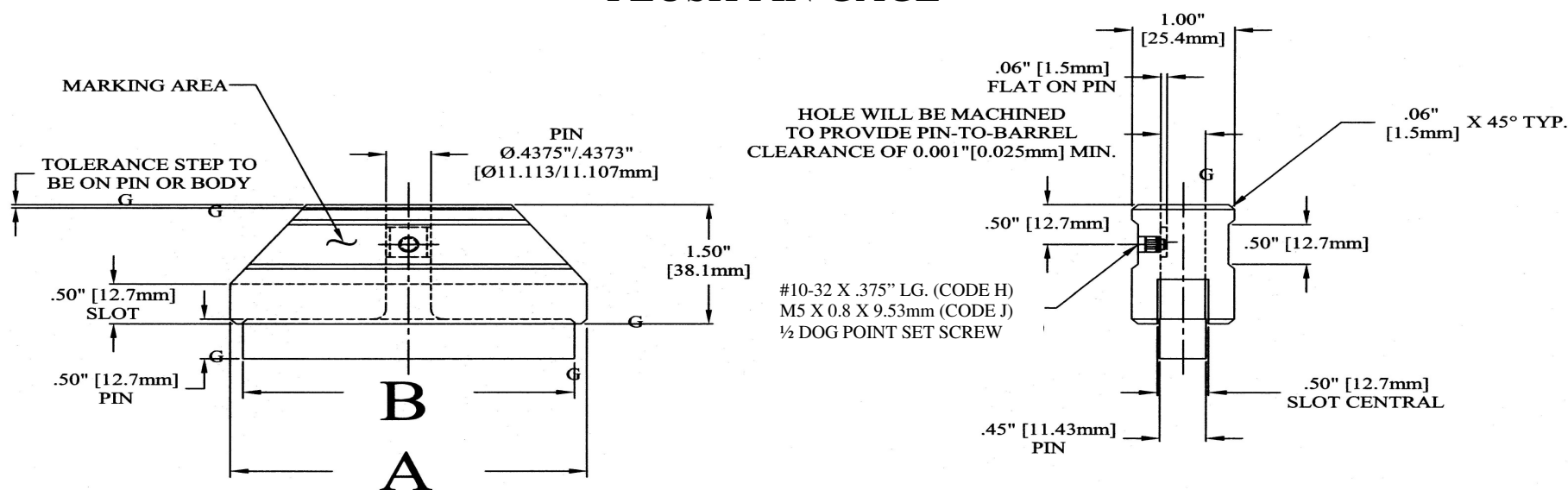
Pin Location  
A1

Pin Length  
G2

TO ORDER FINISH GROUND GAGE, SPECIFY:

- 1) Minimum Gaging Dimension G = \_\_\_\_\_
- 2) Maximum Gaging Dimension G = \_\_\_\_\_
- 3) Tolerance step on Gage Pin = \_\_\_\_\_ or Gage Bar = \_\_\_\_\_
- 4) Specify: Inch (Code H) or Metric (Code J)

# MODEL(S) LC-3000/LC-4000 LARGE COUNTERSINK TYPE FLUSH PIN GAGE



MODEL	RANGE	A	B
LC-3000	1.50" - 3.00" 38.1mm - 76.2mm	3.50" 88.9mm	3.25" 82.55mm
LC-4000	1.50" - 3.00" 38.1mm - 76.2mm	4.50" 114.3mm	4.25" 108.0mm

UNLESS OTHERWISE SPECIFIED ALL DIM'S  
CONFORM TO: ASME/ANSI B47.1-1988

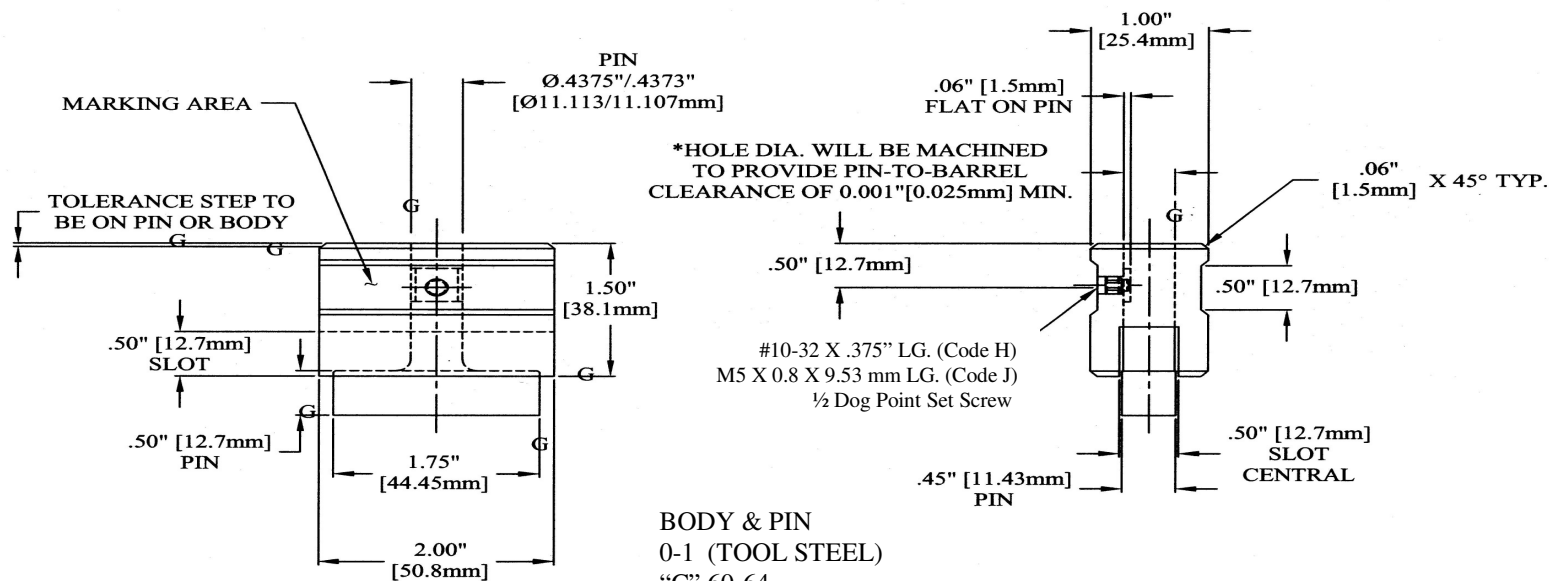
FOR SPECIAL PIN CONFIGURATION CONSULT  
LEADER CORP. FOR QUOTE.

BODY & PIN  
0-1 (TOOL STEEL)  
"C" 60-64  
SQUARE, FLAT,  
PARALLEL & ROUND  
W/IN 0.0002" [0.005mm]  
T.I.R.

## TO ORDER:

1) Hole Diameter & Tolerance:	
2) Hole Depth & Tolerance:	
3) Tolerance Step on:	Pin _____ or Body _____

# MODEL LC-1500 SMALL COUNTERSINK TYPE FLUSH PIN GAGE



UNLESS OTHERWISE SPECIFIED ALL  
DIM'S CONFORM TO: ASME/ANSI  
B48.1-1988

BODY & PIN  
0-1 (TOOL STEEL)  
"C" 60-64  
SQUARE, FLAT,  
PARALLEL & ROUND  
W/IN 0.0002 [0.005mm]  
T.I.R.

FOR SPECIAL PIN CONFIGURATION  
CONSULT LEADER CORP. FOR  
QUOTE

## TO ORDER:

- 1) Hole Diameter & Tolerance: \_\_\_\_\_
- 2) Hole Depth & Tolerance: \_\_\_\_\_
- 3) Tolerance Step on: Pin \_\_\_\_\_ or Body \_\_\_\_\_

# ISO 17025 Certification and Inspection Services



Ring Gages (Thread and Plain)			Plug Gages (Thread and Plain) (Priced per Member or End)		
	SHORT FORM	LONG FORM		SHORT FORM	LONG FORM
Thread Rings 0 to 1 Inch	\$11.00	\$15.00	Thread Plugs 0 to 1 Inch	\$10.00	\$13.00
Thread Rings 1 to 2 Inch	\$14.00	\$18.00	Thread Plugs 1 to 2 Inch	\$12.00	\$15.00
Thread Rings 2 to 4 Inch	\$17.00	\$21.00	Thread Plugs 2 to 3 Inch	\$13.00	\$20.00
Thread Rings 4 to 6 Inch	\$28.00	\$33.00	Thread Plugs 3 to 4 Inch	\$15.00	\$22.00
M1 to M24 Thread Rings	\$11.00	\$15.00	Thread Plugs 4 to 6 Inch	\$18.00	\$25.00
M25 to M50 Thread Rings	\$14.00	\$16.00	Thread Plugs 6 to 12 Inch	\$28.00	\$32.00
M51 to M100 Thread Rings	\$28.00	\$33.00	M1 to M24 Thread Plug	\$10.00	\$13.00
M101 to M152	\$32.00	\$40.00	M25 to M50 Thread Plug	\$12.00	\$15.00
Plain Ring Gages .040 to 2.010 *	N/A	\$20.00	M51 to M100 Thread Plug	\$16.00	\$21.00
Plain Ring Gages 2.011 to 5.510 *	N/A	\$35.00	Thread Set Plugs 0 to 1 Inch	\$10.00	\$20.00
Plain Ring Gages 5.511 to 11.00 *	N/A	\$50.00	Thread Set Plugs 1 to 2 Inch	\$12.00	\$25.00
ANPT-NPTF Plain 6-Step 0 to 2 Inch Rings	N/A	\$35.00	Thread Set Plugs 2 to 3 Inch	\$13.00	\$30.00
ANPT-NPTF Plain 6-Step 2 to 6 Inch Rings	N/A	\$45.00	Thread Set Plugs 3 to 4 Inch	\$15.00	\$35.00
A.P.I. Ring Gages	QUOTE ONLY		Thread Set Plugs 4 to 6 Inch	\$18.00	\$45.00
NPT-NPTF-ANPT 1/16 to 2 Inch Rings	\$17.00	\$28.00	Thread Set Plugs 6 to 12 Inch	\$28.00	\$50.00
NPT-NPTF-ANPT 2 to 6 Inch Rings	\$28.00	\$39.00	M1 to M24 Thread Set Plug	\$10.00	\$20.00
BSPP-Acme-Buttress 0 to 2 Inch Rings	\$19.00	\$30.00	M25 to M50 Thread Set Plug	\$12.00	\$25.00
BSPP-Acme-Buttress 2 to 6 Inch Rings	\$28.00	\$40.00	M51 to M100 Thread Set Plug	\$16.00	\$35.00
			M101 to M152 Thread Set Plug	\$28.00	\$45.00
			Plain Plug Gages 0 to 2 Inch *	N/A	\$10.00
			Plain Plug Gages 2 to 6 Inch *	N/A	\$20.00
			Plain Plug Gages 6 to 12 Inch *	N/A	\$39.00
			ANPT-NPTF Plain 6-Step 1/16 to 2 Inch Plugs	N/A	\$35.00
			ANPT-NPTF Plain 6-Step 2 to 6 Inch Plugs	N/A	\$45.00
			A.P.I. Plug Gages	QUOTE ONLY	
			NPT-NPTF-ANPT 0 to 2 Inch Plugs	\$15.00	\$25.00
			NPT-NPTF-ANPT 2 to 6 Inch Plugs	\$26.00	\$36.00
			BSPP-Acme-Buttress 0 to 2 Inch Plugs	\$19.00	\$30.00
			BSPP-Acme-Buttress 2 to 6 Inch Plugs	\$24.00	\$35.00
			Solid and Flex Plugs	\$11.00	\$15.00

Contact Leader for Non-Standard Ring Gages if  
Customer Does Not Have Master Set Plug to Supply

\* (6) measurements 0°/90°

\*\* Plain Gages with XXX Tolerance - Quote Only

**All Calibration Orders Subject to \$25.00 Minimum Charge**

## Terminology

Certificate of Compliance statement indicates the gage  
complies with The National Bureau of Standards H28

Short Form Certification includes actual  
and specified pitch diameter of member

Long Form Certifications include measurements of pitch  
diameter, major diameter, flank angles and lead.

# Leader Policies & Standards

## Certification/Calibration Orders

Most calibration/certification orders can be performed in one to two weeks. Large orders may require more time.

To promote timely service please submit the following when sending gages for calibration

1. Complete your order on your company's letterhead.
2. Include a brief but detailed statement explaining the desired corrections
3. If you require certification please specify whether they should be long or short from
4. A Purchase Order number.
5. A contact name and phone number.

If you are sending in a ring gage and are not sending in the corresponding setting plug please contact us ahead of time to ensure that we have the plugs in stock. If we do not have the necessary set plugs we will contact you with further ordering information.

If any gages fail calibration we will contact you with rework or replacement costs. If you know ahead of time that you do not want the gages replaced or reworked please note that on the original order.

## Gage Handle Standard

Due to the lack of a formal industry standard LEADER CORPORATION has established its own gage handle standard. Our blank gage handles are color-coded allowing for quick and accurate identification while in turn promoting a uniform and organized inventory. The following LEADER standards will apply to all orders unless the customer provides their own color specifications.

INCH – BLUE HANDLE  
METRIC – YELLOW HANDLE  
TAPER – BLUE HANDLE  
MASTER TAPER – RED HANDLE

## Leader Policies

All calibration orders are subject to \$25.00 net minimum charge in addition to any necessary shipping costs that may apply. All orders are subject to our trade terms of net 30 days and are shipped F.O.B. from our plant in Shelby Twp., MI.

All orders will be shipped freight prepaid UPS unless you request collect, consignment or another carrier. All insurance charges are the responsibility of the customer and will be added to your invoice. Calibration shipments are insured for the invoice amount not by the value of the gages. We are willing to insure additional amounts if requested at the time the order is placed.

All Purchase Orders and Quote Requests must specify "certifications" if you require them. Certifications vary and are not a required service. A certification of conformance can be provided at a later date although the service may require the gage to be returned to Leader at the customer's expense.

# Gagemaker's Tolerance

Above	To & Incl	XXX	XX	X	Y	Z
0.010" .254mm	0.825" 20.95mm	.00001" .00025mm	.00002" .0005mm	.00004" .001mm	.00007" .00175mm	.0001" .0025mm
0.825" 20.95mm	1.510" 38.35mm	.000015" .00038mm	.00003" .00075mm	.00006" .0015mm	.00009" .00225mm	.00012" .003mm
1.510" 38.35mm	2.510" 63.75mm	.00002" .0005mm	.00004" .001mm	0.00008 .002mm	.00012" .003mm	.00016" .004mm
2.510" 63.75mm	4.510" 114.55mm	.000025" .00063mm	.00005" .00125mm	.0001" .0025mm	.00015" .00375mm	.0002" .005mm
4.510" 114.55mm	6.510" 165.35mm	.000033" .00083mm	.000065" .001625mm	.00013" .00325mm	.00019" .00475mm	.00025" .00625mm
6.510" 165.35mm	9.010" 228.85mm	.00004" .001mm	.00008" .002mm	.00016" .004mm	.00024" .006mm	.00032" .008mm
9.010" 228.85mm	12.010" 305.05mm	.00005" .00125mm	.0001" .0025mm	.0002" .005mm	.0003" .0075mm	.0004" .01mm
12.010" 305.05mm	15.010" 381.25mm	.000075" .00188mm	.00015" .00375mm	.0003" .0075mm	.00045" .01125mm	.0006" .015mm
15.010" 381.25mm	18.010" 457.45mm	.0001" .0025mm	.0002" .005mm	.0004" .01mm	.0006" .015mm	.0008" .02mm
18.010" 457.45mm	21.010" 533.65mm	.000125" .00313mm	.00025" .00625mm	.0005" .0125mm	.00075" .01875mm	.001" .025mm

The chart of Product Tolerances for plain plug and ring gages may be used as a guide for recommended gage tolerance.

This assumes a given product tolerance. The user should pre-determine wear allowance and other similar concerns when gage specifications are being defined.

When considering Plain Plug Gages, the "Go" member will have a positive or plus tolerance and the "Nogo" member will have a minus or negative tolerance. Conversely, a "Go" Plain Ring Gage will have a minus or negative tolerance and the "Nogo" Plain Ring Gage will have a plus or positive tolerance.

Standard practice permits the total product tolerance of 10% to be equally divided between the "Go" and "Nogo" members.

Notching requirements generally specify that the "minimum" notch depth will have a plus tolerance while the "maximum" notch depth will have a minus tolerance.



# LEADER CORPORATION

Specialists dedicated to the design and manufacturing of  
Precision tools & gages since 1958.

## Products & Services

- Jig Grinding (Moore Equipment & Accessories)
- O.D.-I.D. Thread Grinding (.010 to 17")
- Gage Calibration and Inspection Services
- Custom Lathe and Mill Work (CNC Mazak)
- Surface Grinding
- Thread Plug Gages
- Thread Ring Gages
- Thread Setting Plugs
- Reversible Thread Gages
- S.T.I. Thread Gages
- A.P.I. Gages
- Tapered Pipe Gages
- Metric Gages
- Acme Gages
- Buttress Gages
- Whitworth Gages
- Square Threads
- British Pipe Gages
- Variable Gaging
- Cylindrical Plug Gages
- Cylindrical Ring Gages
- Progressive Plug Gages
- Pin Type Gages
- Master Disks
- Profile Gages
- Paddle Gages
- Mandrils
- Fixture Gages
- Concentricity Gages
- Flush Pin Gages
- True Position Gages
- Production Thread Grinding
- Radius Gages
- Receiver Gages
- Template Gages
- Custom Lapping
- Lead Screws
- Workstation
- Storage Systems

**Tools • Dies • Fixtures • Gages • Molds • Prototypes • Exotic Metals**

We are Authorized Distributors for the Following Companies:

- Leitech U.S., Limited
- Mahr Federal
- The L.S. Starrett Company
- Mitutoyo Corporation
- Marposs
- Meyer Gage Company
- Brown and Sharp
- Diatest
- WUMO Powered Thread Systems
- Vermont

**51644 Filomena Drive  
Shelby Twp., MI 48315  
Ph. (586) 566-7114 Fax (586) 566-7115  
info@leader-corp.com  
www.leader-corp.com**